



Factsheets



02 512 22 00 | info.shr@sava.si
www.sava-hotels-resorts.com

ZDRAVILIŠČE RADENCI
SAVA HOTELS & RESORTS

ZDRAVILIŠČE RADENCI



OUR ACCOMMODATION FACILITIES

HOTEL RADIN★★★★

HOTEL IZVIR★★★★



ADDITIONAL OFFER

WELLNESS WELLNESS

ZDRAVILIŠČE RADENCI

HEALTH CENTRE

HEALTH LOUNGE

BUSINESS MEETINGS

The heart says yes!

Zdravilišče Radenci has more than 140 years of wellness tradition built on 4 natural healing factors. Mineral water rich in CO₂, thermal water, healing mud, and a beneficial climate with more than 250 sunny days in a year, are the perfect recipe for a healing relaxation! Both Zdravilišče Radenci hotels are connected with a thermal oasis which has internal and external pools, a wellness centre, and a health centre. The heart of the complex is the Health lounge, with a spring of mineral water rich in CO₂. The guests get their water for the drinking treatment directly at the source! Radenci health resort is also known for its mineral baths, which are rich in CO₂ and especially beneficial for blood pressure regulation. Guests at the modern Health Centre in Zdravilišče Radenci, which offers 24/7 care and specialises in cardiovascular health, often enjoy these baths. The warm and welcoming staff are another reason why many guests return here every year!





HOTEL RADIN★★★★



General information

- ▶ Hotel category: ****
- ▶ Check-in: 2 PM /Check-out: 11 AM
- ▶ Late check-out: subject to availability, surcharge
- ▶ Reception opening hours: 24/7
- ▶ Number of rooms: 269
- ▶ Number of main beds: 413
- ▶ Number of all beds: 554 (main + additional beds)
- ▶ Internet: Wi-Fi, Internet corner (2 computers)
- ▶ Hotel restaurant, café, aperitif bar
- ▶ Thermal Oasis
- ▶ Wellness Corrium
- ▶ Health Centre
- ▶ Conference capacities
- ▶ Electricity: 220 V
- ▶ Laundry and ironing: surcharge
- ▶ Parking: 167 parking spaces (6 spaces for persons with disabilities, 6 spaces for buses)
- ▶ Credit cards: Mastercard, Diners, Visa, Maestro
- ▶ Certificates: cycling and hiking hotel

RADIN B Hotel rooms

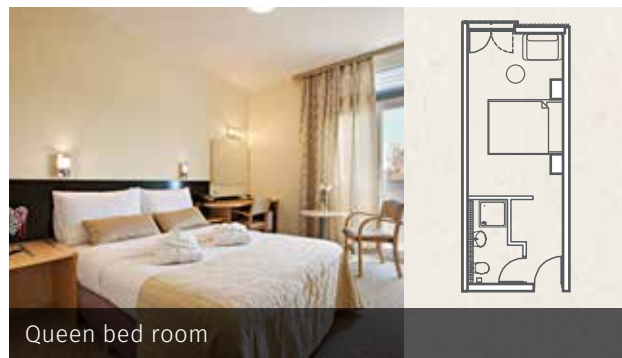
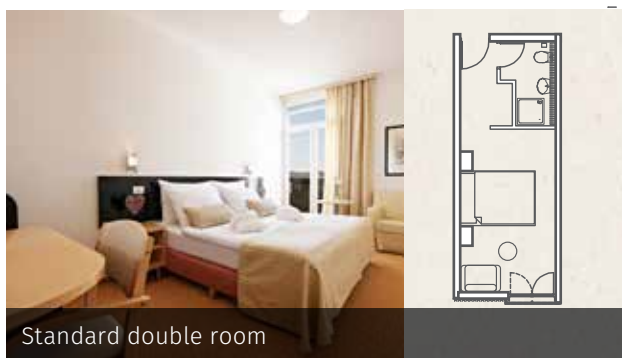
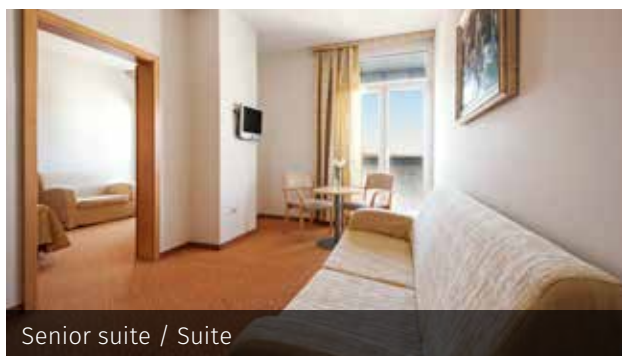
- ▶ Number of floors: 8
- ▶ Lift: 2
- ▶ Room features: all rooms have air conditioning, a telephone, a TV, a minibar, and a safe deposit box. The floors have textile covering (not antiallergic). The bathroom floor has ceramic tiles.
- ▶ Opened/refurbished: 1980/2005

RADIN A Hotel rooms

- ▶ Number of floors: 6
- ▶ Lift: 2
- ▶ Room features: all rooms have a telephone, a TV, a minibar, and a safe deposit box. The floors have textile covering (not antiallergic). The bathroom floor has ceramic tiles.
- ▶ Opened/refurbished: 1972/2013 (2013: energy renovation; 2014: partial renovation of rooms; 2020: partial renovation of rooms)

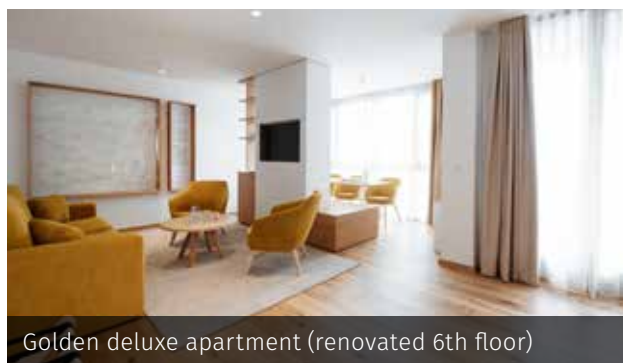
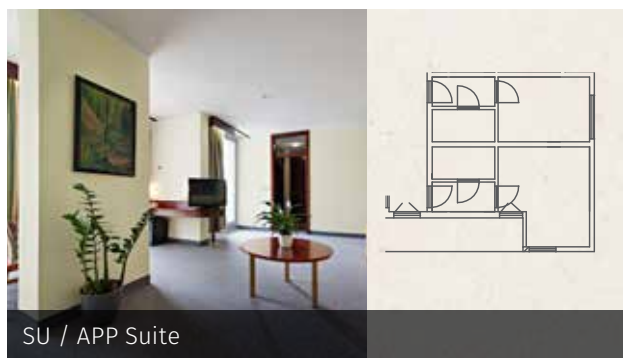
Hotel RADIN B rooms and equipment

Hotel Radin Standard	Senior suite / Suite	Standard double room	Queen bed room
Size	44.20 m ²	20.90 m ²	16.50 m ²
Number	3	49	75
Max capacity/room (including additional beds)	3 + 1	2 + 1	2
Main beds	3 (2x90x200 cm)	49 (2x90x200 cm)	75 (140x200 cm)
Additional beds	3 (140x200 cm)	49 (70x180 cm)	0
View	parking	parking	Mura river (67), park (8)
Air conditioning	all rooms	all rooms	all rooms
Balcony	2	French balcony	French balcony
Shower	3	49	75



Hotel RADIN A rooms and equipment

Hotel Radin Superior	SU / APP Suite	Family rooms/con- nected rooms	Standard double room	Queen bed room	Classic single room
Size	61.20 m ²	33.70 m ²	24.45 m ²	19.20 m ²	18.20 m ²
Number	3	7	80	40	12
Number of connected rooms:	0	7	0	0	0
Max capacity/room (including additional beds)	2 + 2	2 + 1	2 + 1	2	1
Main beds	3 (2 x 90 x 200 cm)	7 (2 x 100 x 200 cm) 110 x 180 cm (4)	80 (2 x 90 x 200 cm)	40 (160 x 200 cm)	12 (100 x 200 cm)
Additional beds	3 (140 x 200 cm)	70 x 180 cm (2) 100 x 200 cm (1)	72 (110 x 180 cm)	0	0
View	Mura River (1), parking (2)	Mura River (3), park (2), parking (2)	Mura river (38), park (42)	Mura river (10), park (30)	Mura river
Bathtub & shower	all rooms	all rooms	all rooms	23	0
Bidet	all rooms	all rooms	all rooms	all rooms	all rooms
Shower	0	0	0	17	all rooms
Air conditioning	all rooms	all rooms	73	29	0





Gastronomy

	Hotel Radin	Buffet restaurant (pool complex)	Swing Café	Stil Aperitif Bar
Capacity	450	50	100	70.
Breakfast	local, classic / buffet + diet corner		/	/
Lunch	local, classic / buffet		/	/
Dinner	local, classic / buffet		/	/
Dress code	smart casual	sporty, bathrobe	smart casual	casual



Conference facilities

Lounge or hall	m ²	Seating arrangement			
Congress hall	239	220	/	/	/
Izvir	158	120	80	60	50
Radin	91	50	40	40	42
Miral	89	50	40	40	24
Spring	75	40	30	25	18

THEATRE CONFIGURATION

CLASSROOM

U-SHAPED

BANQUET



HOTEL IZVIR★★★★



General information

- ▶ Hotel category: ****
- ▶ Check-in: 2 PM
- ▶ Check-out: 11 AM
- ▶ Late check-out: subject to availability, surcharge
- ▶ Reception opening hours: 24/7
- ▶ Number of rooms: 128
- ▶ Number of main beds: 217
- ▶ Number of all beds: 232 (main + additional beds)
- ▶ Room features: All rooms have air conditioning, a telephone, a TV, a minibar, and a safe deposit box. The floors have textile covering (not antiallergic). The bathroom floor has ceramic tiles.
- ▶ Internet: Wi-Fi
- ▶ Hotel restaurant, café
- ▶ Thermal Oasis
- ▶ Wellness Corrium

- ▶ Health Centre
- ▶ Electricity: 220 V
- ▶ Parking: 167 parking spaces (6 spaces for persons with disabilities, 6 spaces for buses)
- ▶ Credit cards: Mastercard, Diners, Visa, Maestro

HOTEL IZVIR ROOMS

- ▶ Number of floors: 5
- ▶ Lift: 1
- ▶ For persons with disabilities: 5 rooms
- ▶ Opened/refurbished: 1964/2000

HOTEL IZVIR-MEDICO ROOMS

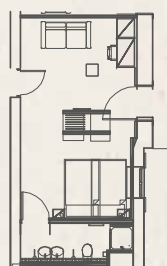
- ▶ Number of floors: 3
- ▶ Lift: 1
- ▶ Opened/refurbished: 1934/2009

Rooms and equipment

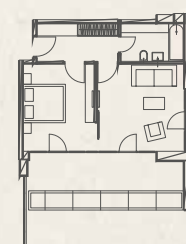
	Family rooms / Suite	Standard double room	Standard single room	Comfort double room	Standard single room	Standard double room
Room				Izvir-Medico	Izvir-Medico	Izvir-Medico
Size	53.00 m ²	22.00 m ²	14.80 m ²	28.80 m ²	12.90 m ²	16.40 m ²
Number	10	35	14	4	25	40
Number of connected rooms:	10	0	0	0	0	0
Max capacity	2 + 2	2 + 1	1	2	1	2
No. of rooms for guests with disabilities	0	0	5	0	0	0
Main beds	10 (2 x 90 x 200 cm)	35 (2 x 90 x 200 cm)	14 (90 x 200 cm)	4 (160 x 200 cm)	25 (90 x 190 cm)	35 (150 x 190 cm), 5 (160 x 200 cm)
Additional beds	10 (140x190 cm)	5 (80 x 190 cm)	0	0	0	0
View	Courtyard / Mura river	Courtyard / Mura river / pool	Mura river / pool	park	park / Mura river	park / Mura river
Balcony	5	15	0	2	0	6
Minibar	all rooms	all rooms	all rooms	all rooms	all rooms	all rooms
Shower	all rooms	15	all rooms	all rooms	all rooms	35
Bathtub & shower	0	20	0	0	0	5



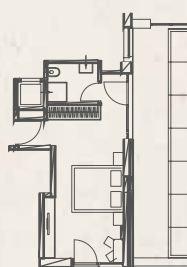
Family rooms / Suite



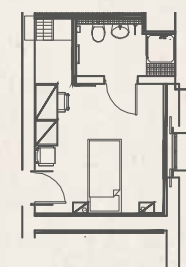
Izvir-Medico Comfort double room



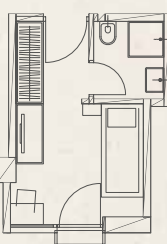
Standard double room



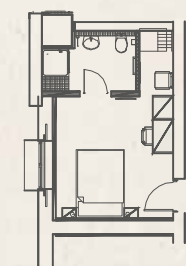
Izvir-Medico Standard single room



Standard single room



Izvir-Medico Standard double room





Gastronomy

	Izvir Restaurant	Buffet restaurant (pool complex)	Izvir Café
Capacity	140 seats	50 seats	30 seats
Breakfast	local, classic buffet + diet corner	/	/
Lunch	local, classic buffet	/	/
Dinner	local, classic buffet	/	/
Dress code	smart casual	sporty, bathrobe	smart casual
Special features	Vegetarian food, diet food, food can be prepared for guests with specific needs (allergies).	Daily lunches, quick meals, salads and deserts	Various hot and cold drinks, snacks and deserts





Swimming pools

	Indoor pool	Outdoor pool	Indoor children's pool	Outdoor children's pool	Outdoor youth pool
Depth	90–165 cm	135 cm	0–30 cm	0–30 cm	0–30 cm
Temperature	28–36°C	28–34°C	33°C	28–29°C	28–29°C
No. of pools	4	4	1	1	1
Size	775 m²	575 m²	20 m²	42 m²	100 m²
Water	ther- mal/ regular	thermal	thermal	thermal	thermal
Admission	free of charge for hotel guests				
Other features					
Poolside bar	yes	no	yes	yes	yes
Children's en- tertainment	yes	no	no	no	no



Corrium Wellness

	Corrium Wellness
Saunas	3 Finnish, 1 infrared, 1 tiliarium, 1 steam
Massages	36 types of massage
Gym	1
Beauty services	manicures/pedicures
Baths	8
Cosmetic product lines	Afrodita, Babor, Thermalium

DISCOVER THE LAND OF A THOUSAND BUBBLES



A health resort with more than 135 years of tradition



Drinking treatments with mineral water rich in CO₂



Mineral bath in CO₂-rich mineral water from Radenci



Mineral Wellness



Health Centre 24/7



Thermal Oasis



Guided workouts outdoors and in the pool



Hiking trails among vineyards



Bubbles of the famous Radgonska penina sparkling wine in the nearby Radgona Cellar



HOTELS & RESORTS

Sava Hoteli Bled
Terme 3000 – Moravske Toplice
Zdravilišče Radenci
Terme Ptuj
St. Bernardin Resort Portorož
Salinera Resort Strunjan
San Simon Resort Izola

Follow us on



www.sava-hotels-resorts.com
www.hoteli-bernardin.si