

Factsheets



SAVA HOTELI BLEĐ



The view, the feeling!

A visit to Bled clears your thoughts and awakens your spirit, loses romantics in reverie and motivates athletes, relaxes the soul and invigorates the body. Where the stunning beauty of the unique Alpine scenery is in tune with harmonious energies and the healing power of thermal water, Sava Hoteli Bled brings together the best Bled has to offer. Waking up to a new morning with breathtaking views of the Alpine idyll. Swimming in thermal swimming pools, relaxing with an Alpine massage, or indulging in the probably creamiest dessert in the world – all of your experiences with us will be crowned with the best views of an emerald lake, a dreamy island, a romantic castle, and majestic mountain tops. Experience this view and feeling that you will keep on reliving!



OUR ACCOMMODATION FACILITIES

GRAND HOTEL TOPLICE★★★★★

RIKLI BALANCE HOTEL★★★★S

HOTEL PARK★★★★

HOTEL SAVICA GARNI★★★★

HOTEL JADRAN★★★



WELLNESS CENTRES

ŽIVA WELLNESS POOL COMPLEX

ŽIVA WELLNESS

LUISA SPA

SPA PARK



CULINARY OFFER

PARK CAFÉ

JULIJANA RESTAURANT

LAKE LOUNGE



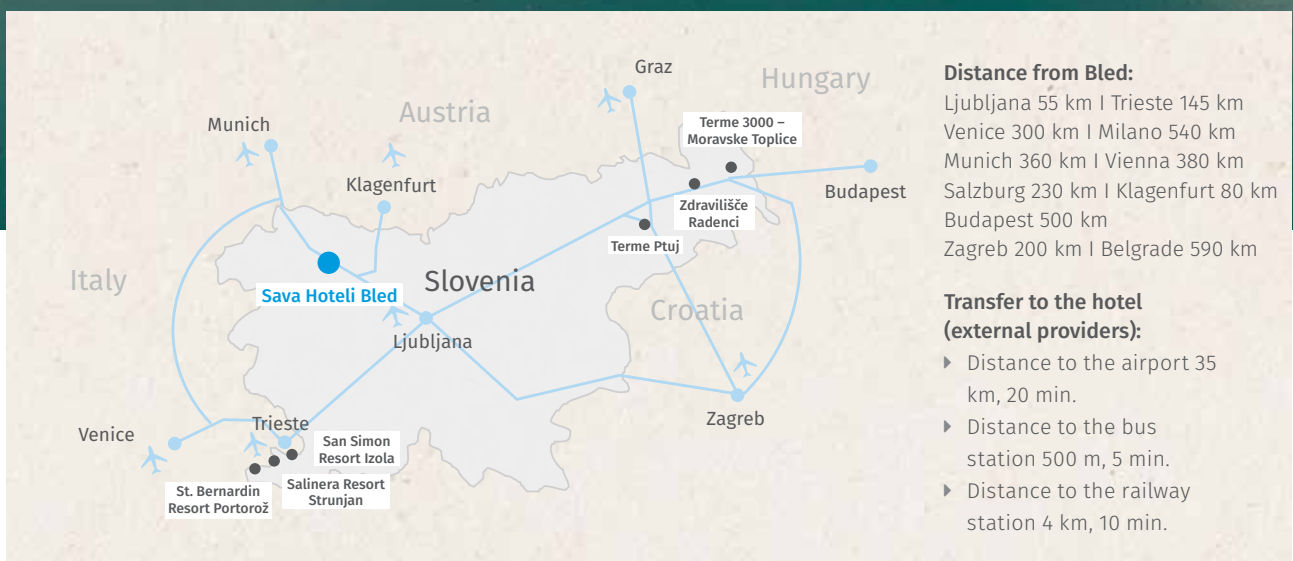
BUSINESS MEETINGS

CONFERENCE FACILITIES

WITH A VIEW



- | | |
|------------------------|------------------------|
| 1. Grand Hotel Toplice | 6. Park Café |
| 2. Rikli Balance Hotel | 7. Živa Wellness |
| 3. Hotel Park | 8. Julijana Restaurant |
| 4. Hotel Savica Garni | 9. Lake Lounge |
| 5. Hotel Jadran | |



Information about parking

Bled has always been renowned for its pristine nature. As we all want it to stay this way, the decision has been made to eliminate large vehicles from the centre of Bled. Buses and other larger vehicles can drop off and pick up guests in front of the hotels; however, parking of vehicles exceeding 3.5 tons has been redirected to the central bus parking area (payable) in the vicinity of our hotels (900 m from the hotels). Individual hotel guests can park their vehicles in front of the hotel (parking fee).





GRAND HOTEL TOPLICE★★★★★



General information

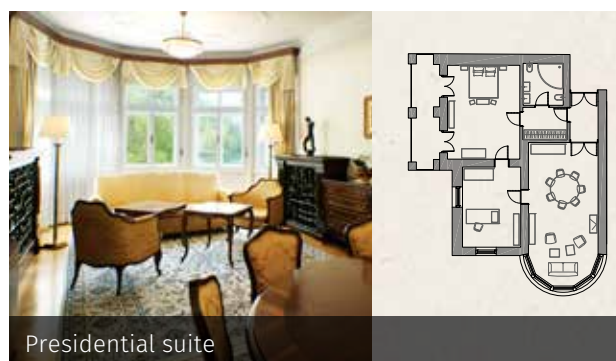
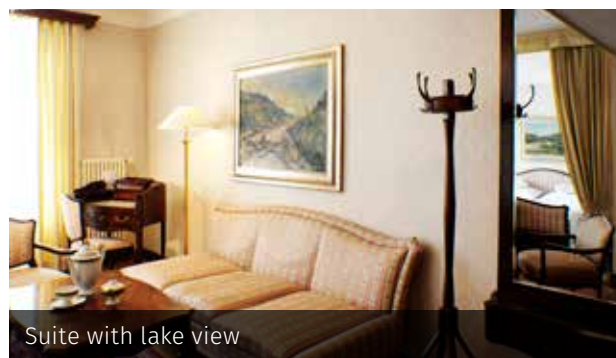
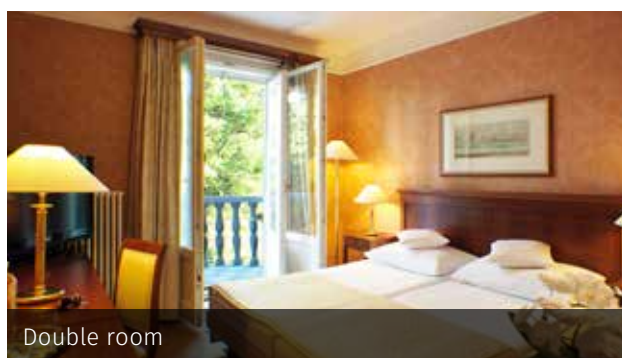
- ▶ Hotel category: *****
- ▶ Opened/refurbished: 1931/2002, 2014
- ▶ Check-in: 15:00
- ▶ Check-out: 11:00
- ▶ Late check-out: subject to availability, surcharge
- ▶ Reception opening hours: 24/7
- ▶ Number of floors: 5
- ▶ Lift: 1
- ▶ Number of rooms: 87
- ▶ Number of main beds: 172
- ▶ All lake view rooms with balcony
- ▶ Rooms: all rooms have air conditioning, a TV, a minibar, and a safe deposit box.
- ▶ Luisa Spa with a thermal swimming pool
- ▶ Hotel restaurant
- ▶ Julijana Restaurant, awarded with the Michelin Plate for fresh ingredients, carefully prepared, and a good meal, and a holder of three Gault & Millau toques
- ▶ Lake Lounge with a terrace
- ▶ Private lido in the summer season

- ▶ Boathouse with boat rental (1-hour free rental per room in the summer season)
- ▶ Conference halls with lake view
- ▶ Kettle for tea/coffee
- ▶ Bathrobe and comfortable slippers
- ▶ Internet: Wi-Fi
- ▶ Computer: 1 in the lobby
- ▶ Laundry: surcharge
- ▶ Ironing: surcharge
- ▶ Electricity: 220 V
- ▶ For smokers: smoking is permitted on the balcony
- ▶ Baby cot by prior arrangement and with a surcharge
- ▶ Credit cards: Mastercard, Diners, Visa, Maestro, Ba
- ▶ Certificates: Small Luxury Hotels member, ISO 9001:2008, HACCP

**SMALL
LUXURY
HOTELS**
OF THE WORLD®

Rooms and equipment

	Single room	Single room with lake view	Double room	Double room with lake view	Suite with lake view	Presidential suite with lake view	Room for guests with disabilities	Total
Number	8	3	27	19	28	1	1	87
Size	13–17 m ²	13–17 m ²	22–25 m ²	22–25 m ²	39–45 m ²	93 m ²	31 m ²	
Maximum number of guests per room*	1	1	2	2	3	2	2	
Bed size	140 x 200 (queen bed)	140 x 200 (queen bed)	2 x 90 x 200 (German double)	2 x 90 x 200 (German double)	2 x 90 x 200 (German double) + sofa 120 x 180	2 x 90 x 200 (German double)	2 x 90 x 200 (German double)	
Bath with shower			15	12	28	1		
Shower	8	8	12	7			1	





Luisa Spa

Wellness Centre

Saunas	1 Turkish sauna, 1 Finnish sauna, 1 infrared sauna (free for hotel guests)
Massages	13 types of massage
Beauty services	facials, manicures, pedicures, hair removal
Baths	1
Cosmetic products	Heaven





Swimming pool in Luisa Spa

Indoor pool	
Depth	125 cm
Temperature	22° C
No. of pools	1
Size	82 m²
Water	thermal
Admission	free of charge for hotel guests

The pool is filled with fresh spring water. Hotel guests enjoy free admission to the Živa Wellness pools (Rikli Balance Hotel)





Culinary offer

	Julijana Restaurant	Grand Restaurant	Grand Hall Restaurant	Lake Lounge/Presidential Lounge	Lake Lounge
Capacity	restaurant 22 terrace 24	140	260–330	100 44	terrace 44
Breakfast	/	local, classic, international, à la carte	/	/	/
Lunch	by prior arrangement	by prior arrangement classic, local, international buffet or sit-down	by prior arrangement	/	by prior arrangement
Dinner	à la carte sit-down	local, classic, international combined (starters and salad bar buffet, other courses sit-down)	by prior arrangement	by prior arrangement	by prior arrangement
Dress code	smart casual	smart casual	smart casual	smart casual	casual
Special features	top-quality culinary offer seasonal menus, rich selection of wines	Seasonal menus, local produce (cheese, yoghurt)	MICE, weddings	MICE (concerts, receptions, wedding ceremonies) live music	open only in the summer, limited selection of food (snacks, desserts, ice cream), receptions, wedding ceremonies, food served on the beach








The Original Bled Cream Cake is available in all hotels, cafés, and restaurants.

Room service: 00:00–24:00. If necessary, the schedule of full or half board meals can be adjusted or prolonged.





Conference facilities

Lounge or hall	m ²	Seating arrangement						
								
Panorama	217.20	150	80	50	56	60	120	200
Panorama I + II	141.70	120	60	40	46	50	80	150
Panorama I	69.50	50	30	24	20	24	/	/
Panorama II	72.20	50	30	24	20	24	/	/
Panorama III	72.50	50	30	24	20	24	/	/
Grand I	231	200	120	/	60	60	140-160	250
Grand	393.80	270	160	/	60	60	300	350
Presidential Lounge	115.92	40	30	20	/	/	/	30
Bridge room	36	20	16	10	/	/	/	/
Lake Lounge	210	/	/	/	/	/	/	150



THEATRE
CONFIGURATION



CLASSROOM



L-SHAPED



T-SHAPED



U-SHAPED



BOARDROOM
(SHARED TABLE)



BANQUET





RIKLI BALANCE HOTEL ★★★★★ S



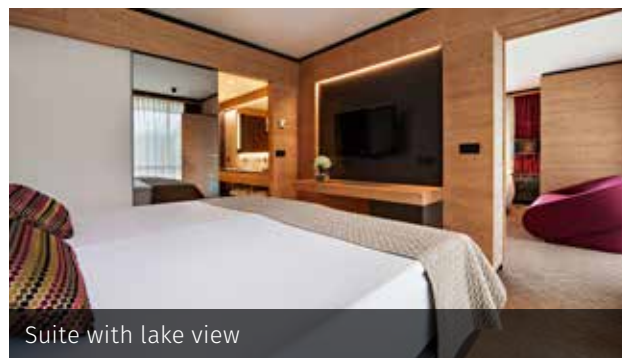
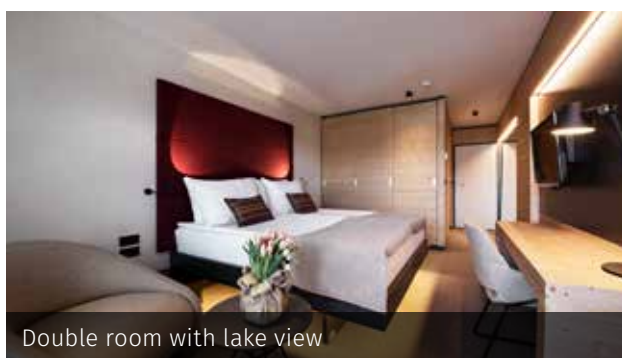
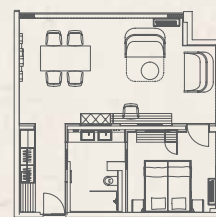
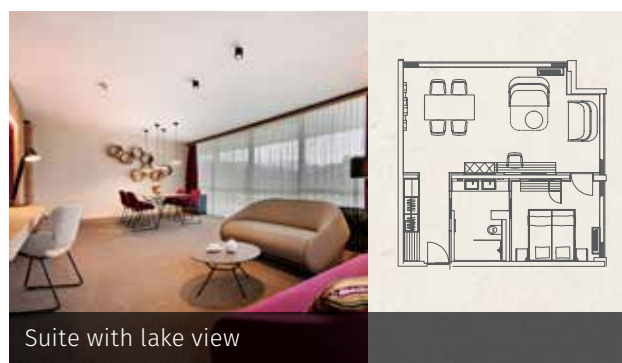
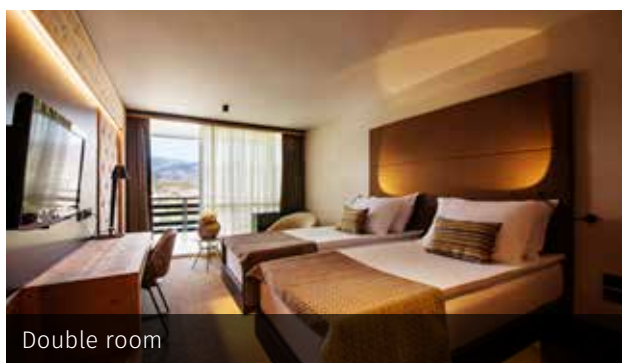
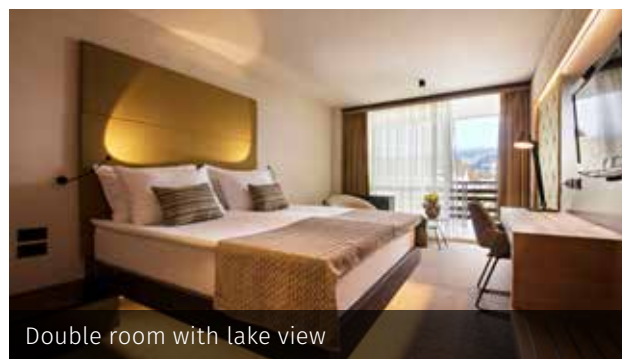
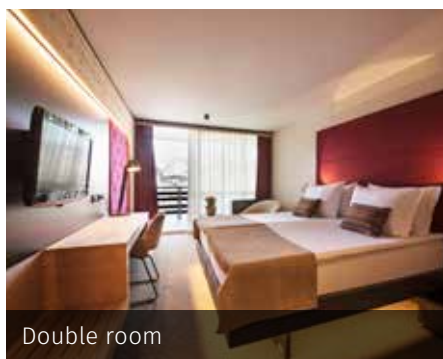
General information

- ▶ Hotel category: ****s
- ▶ Opened/refurbished: 1969/2017 and 2018
- ▶ Check-in: 14:00
- ▶ Check-out: 11:00
- ▶ Late check-out: subject to availability, surcharge
- ▶ Reception opening hours: 24/7
- ▶ Number of floors: 5
- ▶ Lift: 2
- ▶ Number of rooms: 150
- ▶ Number of main beds: 300
- ▶ Rooms: all rooms are furnished with natural local materials and thematically decorated (wood, beekeeping, embroidery, honey-bread).
- ▶ The rooms have air conditioning and a balcony, a TV, a minibar, and a safe deposit box. The rooms have a textile floor covering. Chromo therapy is available in some of the rooms.
- ▶ Wellness Živa with the largest saunas in Bled
- ▶ Swimming pool complex with an indoor waterslide
- ▶ Hotel restaurant

- ▶ Conference centre with halls with lake view
- ▶ Bathrobe in the room
- ▶ Kettle for tea/coffee in the room
- ▶ Internet: Wi-Fi
- ▶ Computer: 1 in the lobby
- ▶ Laundry: surcharge
- ▶ Ironing: surcharge
- ▶ Electricity: 220 V
- ▶ For children: pool complex for children
- ▶ Baby cot by prior arrangement and with a surcharge
- ▶ No pets allowed
- ▶ For smokers: smoking is permitted on the balcony
- ▶ Credit cards: Mastercard, Diners, Visa, Maestro, Ba
- ▶ Certificates: ISO 9001:2008, HACCP

Rooms and equipment

	Double room	Double room with lake view	Suite with lake view	Connecting rooms	Connecting rooms with lake view	Room for guests with disabilities	Total
Number	59	60	10	10	10	1	150
Size	26 m ²	26 m ²	50 m ²	50 m ²	50 m ²	26 m ²	
Maximum number of guests per room*	3	3	4	5	5	2	
Bed size	180 x 200 or 2 * 90 x 200	180 x 200 or 2 * 90 x 200	180 x 200	180 x 200 and 2 * 90 x 200	180 x 200 and 2 * 90 x 200	2 * 90 x 200	
Additional bed	70 x 190	70 x 190	140 x 190	70 x 190	70 x 190	90 x 200	
Bath with shower	21	18		5	5		
Shower	38	42	10	5	5	1	





Wellness Živa

Živa Wellness Centre

Saunas

2 Finnish saunas, a bio sauna, an infrared sauna, 2 steam saunas, an ice treatment, a cooling pool, heated loungers in the relaxation area, a tea and fruit corner

Massages

a variety of massages, rituals, and programmes for couples

Beauty services

facials, manicures, pedicures, hair removal

Baths

2 baths

Cosmetic products

Heaven, Afrodita





Pools in the Živa Wellness Centre

Swimming pools	Indoor pool	Outdoor pool	Children's pool
Depth	130 cm	130 cm	60 cm
Temperature	30°C Whirlpool temperature 35°C	30°C	30°C
Air temperature	28°C		
No. of pools	4	1	1
Size	402 m ²	34 m ²	19 m ²
Water	thermal	thermal	thermal
Admission	free of charge for hotel guests	free of charge for hotel guests	free of charge for hotel guests
Other features			
Waterslide	1	/	/
Poolside bar	1	/	/





Culinary offer

	Hotel restaurant	Aperitif Bar Rikli
Capacity	225	30
Breakfast	classic, local, international buffet	
Lunch	classic, local, international, buffet or sit-down, by prior arrangement	MICE (receptions, coffee break) live music
Dinner	classic, local, international	
Dress code	smart casual	casual
Special features	local dishes local modern cuisine	

The Original Bled Cream Cake is available in all hotels, cafés, and restaurants. Room service: 08:00–22:00. If necessary, the schedule of full or half board meals can be adjusted or prolonged.





Conference facilities

Lounge or hall	m²	Seating arrangement						
ARNOLD	337.5	350	200	64	50	72	260	420
ARNOLD I	182.25	200	120	32	34	44	130	210
ARNOLD II	155.25	150	80	32	30	36	130	210
ROSA	30.7	/	/	12	/	/	/	/
VODA	69.13	36	20	37	20	24	16	40
ZRAK	98.82	80	42	28	28	32	32	100
SONCE	186.1	160	84	28	34	38	80	180
STRAŽA 1	93.84	/	/	34	/	/	/	/
STRAŽA 3	95.2	60	40	26	28	36	/	80
STRAŽA 5	95.2	60	40	28	30	36	/	80
Business suites	36	/	/	10	/	/	/	/

THEATRE CONFIGURATION
 CLASSROOM
 L-SHAPED
 U-SHAPED
 BOARDROOM (SHARED TABLE)
 BANQUET





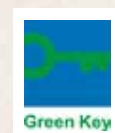
HOTEL PARK★★★★



General information

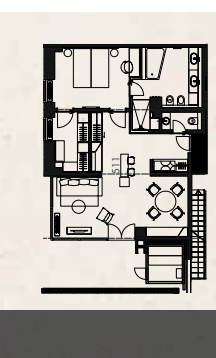
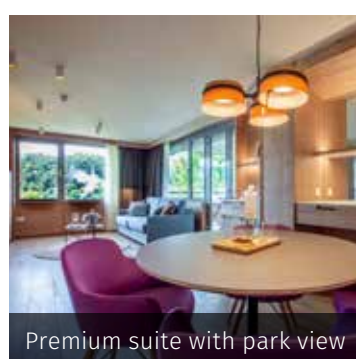
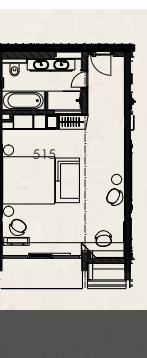
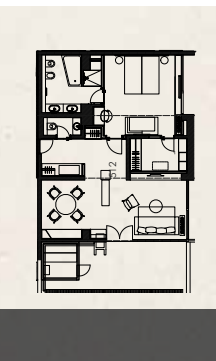
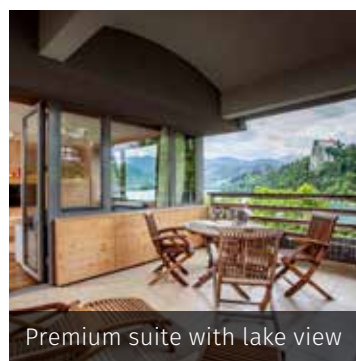
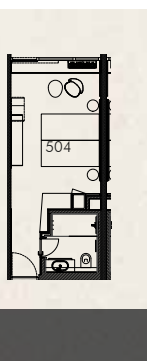
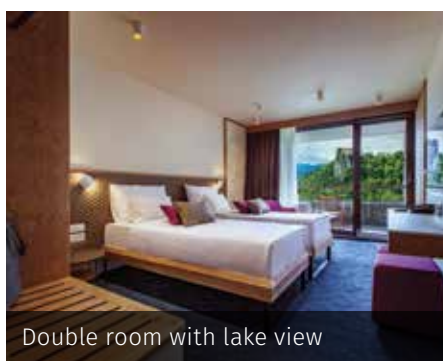
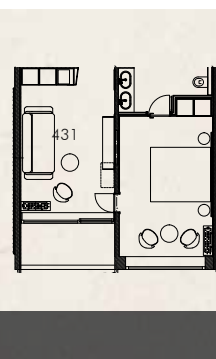
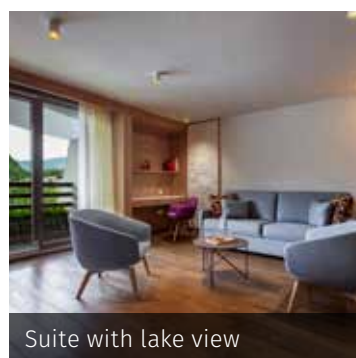
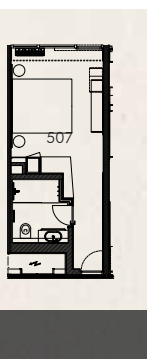
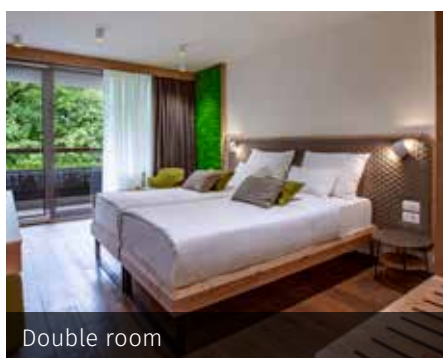
- ▶ Hotel category: ****
- ▶ Opened/refurbished: 1977/2020
- ▶ Check-in: 14:00
- ▶ Check-out: 11:00
- ▶ Late check-out: subject to availability, surcharge
- ▶ Reception opening hours: 24/7
- ▶ Number of floors: 5
- ▶ Lift: 3
- ▶ Number of rooms: 218
- ▶ Number of main beds: 438
- ▶ Rooms: all rooms have air conditioning, a balcony, a telephone, a TV, a minibar, and a safe deposit box. The rooms have parquet floors or a textile floor covering.
- ▶ Hotel restaurant with a wine fountain
- ▶ Spa Park with panoramic saunas and a swimming pool
- ▶ Gym

- ▶ Conference halls with lake view
- ▶ Internet: Wi-Fi
- ▶ Laundry: surcharge
- ▶ Ironing: surcharge
- ▶ Electricity: 220 V
- ▶ For persons with disabilities: room with adapted door width and bathroom
- ▶ Baby cot and pets by prior arrangement and with a surcharge
- ▶ Pets are allowed (restrictions apply)
- ▶ For smokers: smoking is permitted on the balcony
- ▶ Credit cards: Mastercard, Diners, Visa, Maestro, Ba
- ▶ Certificates: ISO 9001:2008, HACCP



Rooms and equipment

	Double room with one bed	Double room	Double room with one bed with lake view	Double room with lake view	Premium double room with lake view	Suite with lake view	Premium suite with lake view	Premium suite with park view	Total
Number	30	80	12	80	5	9	1	1	218
Size	21,6 m ²	23,3 m ²	21,6 m ²	23,3 m ²	36,5 m ²	45,5 m ²	71,5+25 m ² Terrasse	71,5+25 m ² Terrasse	
Maximum number of guests per room*	2	3	2	3	3	4	4	4	
Bed size	160 x 200	2 x 90 x 200	160 x 200	2 x 90 x 200	180 x 200	180 x 200	180 x 200	2 x 180 x 200	
Additional bed		8 rooms – 80 x 180		8 rooms – 80 x 180	80 x 180	180 x 200	180 x 200		
Bath with shower		2		66	5	9	1	1	
Shower	30	76	12	14	4	9	1	1	





Spa Park

Wellness Centre

Saunas	Turkish sauna, Finnish sauna, infrared sauna
Massages	a variety of massages, rituals, and programmes for couples
Beauty services	facials, manicures, pedicures, hair removal
Cosmetic products	Afrodita
Additional services	gym, sunbathing terrace

Wellness Thai Centre Bled

Wellness Centre

Saunas	1 infrared sauna
Massages	Thai





Indoor pool in Hotel Park

Indoor pool	
Depth	135–165 cm
Temperature	30°C in the summer 33°C in the winter
No. of pools	1
Size	166 m ²
Water	thermal
Admission	free of charge for hotel guests






Culinary offer

	Park Restaurant	Aperitif Bar
Capacity	352	30
Breakfast	classic, local buffet	
Lunch	by prior arrangement classic, local, international buffet or sit-down	MICE, receptions, coffee break live music
Dinner	classic, local, international buffet or sit-down	
Dress code	smart casual	casual
Special features	local dishes local modern cuisine	







The Original Bled Cream Cake is available in all hotels, cafés, and restaurants. Room service: 08:00–22:00. If necessary, the schedule of full or half board meals can be adjusted or prolonged.













Conference facilities

Lounge or hall	m ²	Seating arrangement					
							
Prešeren	128	120	60	/	/	/	80
Prešeren I	64	60	30	22	30	36	40
Prešeren II	64	60	30	22	30	36	40
Kosovel	64	55	30	22	30	36	40
Cankar	114.6	110	72	40	54	60	60
PEN 2	62	45	24	20	20	24	/
PEN 3	62	/	/	16	/	18	/
PEN 4 premium	62	/	/	16	/	18	/

 THEATRE CONFIGURATION
  CLASSROOM
  L-SHAPED
  U-SHAPED
  BOARDROOM (SHARED TABLE)
  BANQUET





HOTEL SAVICA GARNI★★★★



General information

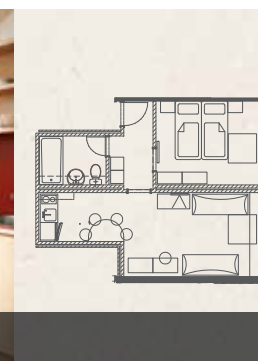
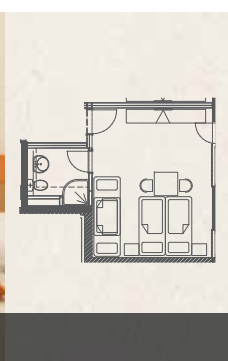
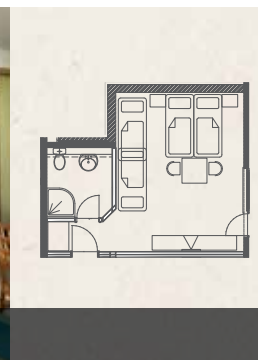
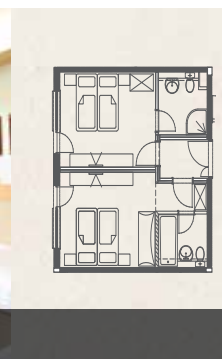
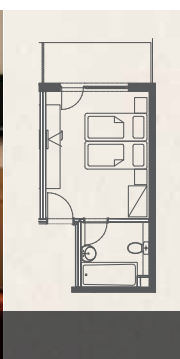
- ▶ Hotel category: ****
- ▶ Opened/refurbished: 1984/2008
- ▶ Check-in: 14:00
- ▶ Check-out: 11:00
- ▶ Late check-out: subject to availability, surcharge
- ▶ Reception opening hours: 24/7
- ▶ Number of floors: 6
- ▶ Lift: 2
- ▶ Number of rooms: 102
- ▶ Number of main beds: 204
- ▶ Rooms: all rooms have air conditioning, a balcony, a telephone, a TV, a minibar, and a safe deposit box. The rooms have a textile floor covering.
- ▶ Hotel restaurant
- ▶ Pools in the Živa Wellness Centre: free admission once a day (3 hours)
- ▶ Živa Wellness (in Rikli Balance Hotel)
- ▶ Surcharge for the World of Saunas in the Živa

- Wellness Centre
- ▶ Internet: Wi-Fi
- ▶ Computer: 1 in the lobby
- ▶ Laundry: surcharge
- ▶ Ironing: surcharge
- ▶ Electricity: 220 V
- ▶ For families: connecting rooms, 14 suites with kitchen, children's playground
- ▶ Baby cot by prior arrangement
- ▶ No pets allowed
- ▶ For smokers: smoking is permitted on the balcony
- ▶ Credit cards: Mastercard, Diners, Visa, Maestro, Ba
- ▶ Certificates: EU Ecolabel, ISO 9001:2008, HACCP, Slovenia Green



Rooms and equipment

	Double room	Quadruple room	Connecting rooms (2 + 2)	Connecting rooms (2 + 3)	Suite with kitchen for 4	Suite with kitchen for 5	Total
Number	16	4	48	20	8	6	102
Size	21.5 m ²	29 m ²	46 m ²	46 m ²	34–40 m ²	36–40 m ²	
Maximum number of guests per room*	2	4	4	5	4	5	
Bed size	2 * 90 x 200	2 * 90 x 200 and 2 * 80 x 180 (bunk bed)	1 * 160 x 200 and 2 * 90 x 200	1 * 160 x 200 and 2 * 90 x 200 and 1 * 80 x 190	160 x 200 and 2 * 90 x 200	2 * 90 x 200 and 2 * 80 x 190 and a sofa	
Bath with shower	10	1	24	10	8	6	
Shower	6	3	24	10			





Culinary offer

Restaurant	
Capacity	restaurant 98 terrace 24
Breakfast	local, classic, international buffet
Lunch	local, classic, international by prior arrangement at the Rikli Balance Hotel restaurant (buffet or sit-down)
Dinner	local, classic, international buffet at the Rikli Balance Hotel restaurant (50 m)
Dress code	casual
Special features	dishes for children

The Original Bled Cream Cake is available in all hotels, cafés, and restaurants. If necessary, the schedule of full or half board meals can be adjusted or prolonged.





Pools in the Živa Wellness Centre at the Rikli Balance Hotel (opposite Hotel Savica Garni)

Swimming pools	Indoor pool	Outdoor pool	Children's pool
Depth	130 cm	130 cm	60 cm
Temperature	30°C Whirlpool temperature 35°C	30°C	30°C
Air temperature	28°C		
No. of pools	4	1	1
Size	402 m ²	34 m ²	19 m ²
Water	thermal	thermal	thermal
Admission	free admission once a day (3 hours)	free admission once a day (3 hours)	free admission once a day (3 hours)
Other features			
Waterslide	1	/	/
Poolside bar	1	/	/



Wellnes Živa at the Rikli Balance Hotel (opposite Hotel Savica Garni)

Živa Wellness Centre

Saunas	2 Finnish saunas, a bio sauna, an infrared sauna, 2 steam saunas, an ice treatment, a cooling pool, heated loungers in the relaxation area, a tea and fruit corner.
Massages	a variety of massages, rituals, and programmes for couples
Beauty services	facials, manicures, pedicures, hair removal
Baths	2 baths
Cosmetic products	Heaven, Afrodita



HOTEL JADRAN ★★ ★★ ★



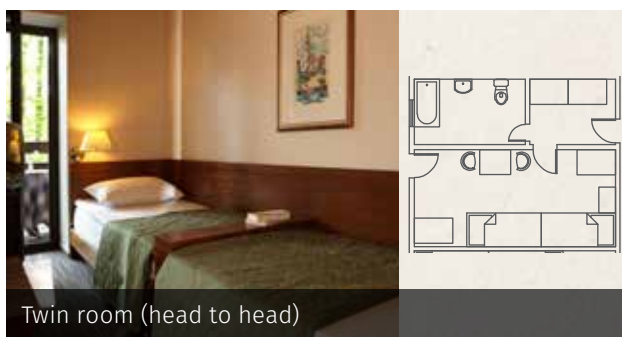
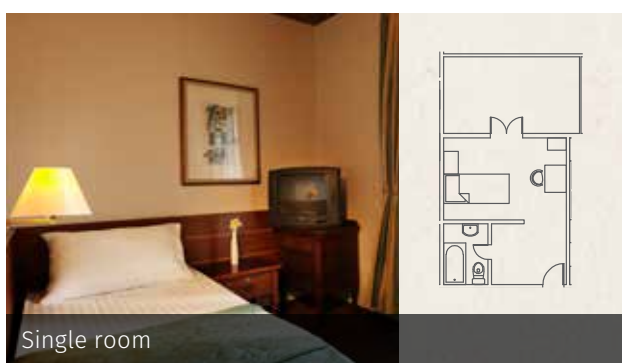
General information

- ▶ Hotel category: ***
- ▶ Opened/refurbished: 1931/partially in 2013
- ▶ Check-in: 14:00
- ▶ Check-out: 11:00
- ▶ Late check-out: subject to availability, surcharge
- ▶ Reception opening hours: 24/7
- ▶ Number of floors: 5
- ▶ Lift: 1
- ▶ Number of rooms: 44
- ▶ Number of main beds: 83
- ▶ Rooms: all rooms have a TV. The rooms have a textile floor covering.
- ▶ Hotel breakfast room
- ▶ Internet: Wi-Fi
- ▶ Computer: 1 in the lobby

- ▶ Laundry: surcharge
- ▶ Ironing: surcharge
- ▶ Electricity: 220 V
- ▶ For smokers: smoking is permitted on the balcony
- ▶ Baby cot and pets by prior arrangement and with a surcharge
- ▶ Credit cards: Mastercard, Diners, Visa, Maestro, Ba

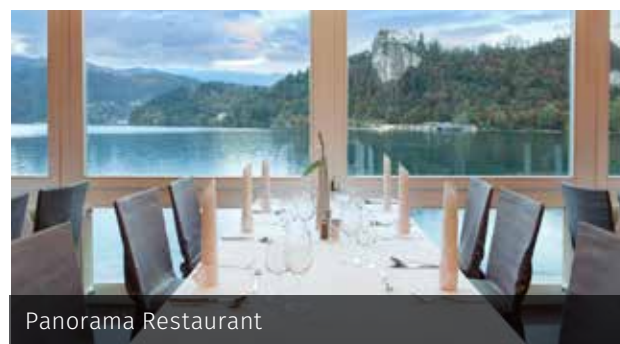
Rooms and equipment

	Single room with lake view	Double room with attached twin beds	Double room	Double room with lake view	Triple room with lake view	Total
Number	5	14	8	14	3	44
Size	13–15 m ²	16–18 m ²	16*24 m ²	18–26 m ²	27–31 m ²	
Maximum number of guests per room*	1	2	2	2	3	
Bed size	90 x 200	2 * 90 x 200	2 * 90 x 200	2 * 90 x 200	2 * 90 x 200 and 1 * 90 x 180	
Bath with shower	5	14	8	14	3	



Culinary offer

Jadran Restaurant	
Capacity	restaurant 48, terrace 10
Breakfast	classic, local, buffet in Hotel Jadran
Lunch	by previous arrangement in one of the restaurants
Dinner	classic, local, buffet in one of the restaurants
Dress code	casual



CULINARY OFFER IN BLED



The Original Bled Cream Cake is a recognisable feature of Bled that you simply must try during your visit. For more than 70 years, the Original Bled Cream Cake has been made in the Hotel Park pastry kitchen, but you can try it in all the bars, restaurants, and hotels of Sava Hoteli Bled. Thanks to Sladogled (Ice Cream with a View), the ice cream flavour created in the pastry kitchen of Hotel Park Bled won the flattering title of the world's best ice cream destination in 2017. Sladogled and other delicious ice cream flavours are available at the Blejska Sladoglednica ice cream parlour, and at Park Café. You can choose from sixteen different flavours, which our pastry chefs adapt to the season.





Park Café
Cesta svobode 15, 4260 Bled
+386 4 579 18 18 | kavarna@hotelibled.com



Julijana Restaurant
Cesta svobode 12, 4260 Bled
+386 31 758 371 | julijana@hotelibled.com

	Park Café	Julijana Restaurant	Lake Lounge
Capacity	restaurant 170 terrace 230	restaurant 22 terrace 24	terrace 44
Lunch and dinner	classic, local, international served à la carte	by prior arrangement, à la carte sit-down	small selection of food (snacks, desserts, ice cream), recep- tions, wedding ceremonies
Dress code	casual	smart casual	casual
Special features	Original Bled Cream Cake, summer music evenings	top-quality culinary offer, rich selection of wines	open only in the summer

DISCOVER BLED AND GREEN SLOVENIA!



Island in the midst of Lake Bled



Bled Castle



Traditional pletna boat



Ride around the lake in the fijaker open carriage



Original Bled Cream Cake



View from Ojstrica to Bled



Hiking in Triglav National Park



Cycling in the Radovna valley



Half an hour drive from the country's capital, Ljubljana

SAVA

HOTELS & RESORTS

Sava Hoteli Bled
Terme 3000 – Moravske Toplice
Zdravilišče Radenci
Terme Ptuj
St. Bernardin Resort Portorož
Salinera Resort Strunjan
San Simon Resort Izola

Follow us on



www.sava-hotels-resorts.com