



Factsheets



+386 5 690 70 00 | booking@sava.si
www.sava-hotels-resorts.com

San Simon

SAVA HOTELS & RESORTS

SAN SIMON RESORT IZOLA



OUR ACCOMMODATION FACILITIES

HOTEL HALIAETUM★★★★

HOTEL MIRTA★★★★

DEPANDANCES SAN SIMON★★★



WELLNESS CENTRE

MIRTA WELLNESS



WATER FUN

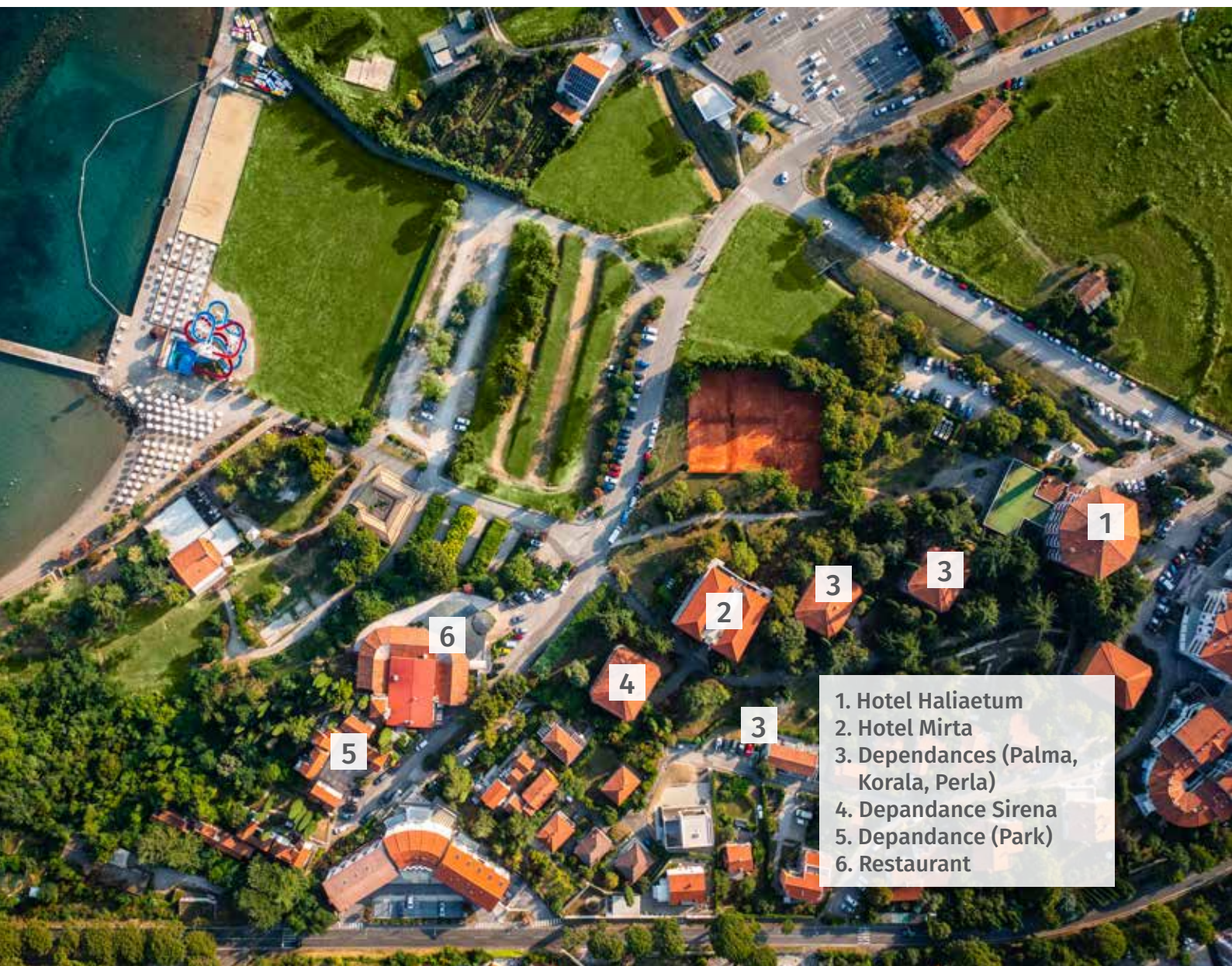
INDOOR POOL WITH HEATED SEA WATER

SAN SIMON BEACH

WATER SLIDE

Lively Mediterranean

San Simon Resort is located in the Simon bay, surrounded by lush Mediterranean greenery. The remains of the antique Roman Haliaetium harbour can still be seen here today. The resort owes its character to the nearby seaside town of Izola, which is always lively, joyful and full of life. It's seaside location, sandy beach with a waterslide, professional children's entertainers, mini club and lively fun all year round brings guests of all generations to the resort. The Roman tradition of joy and celebration is also kept alive all year long – the bustling culinary celebrations and festivals will make sure your tasting buds thoroughly enjoy your seaside holidays!





HOTEL HALIAETUM ★★★★★



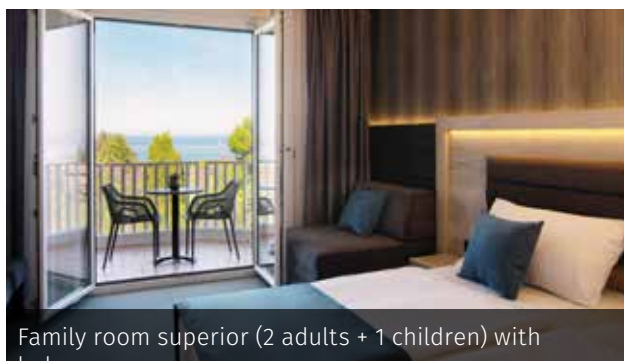
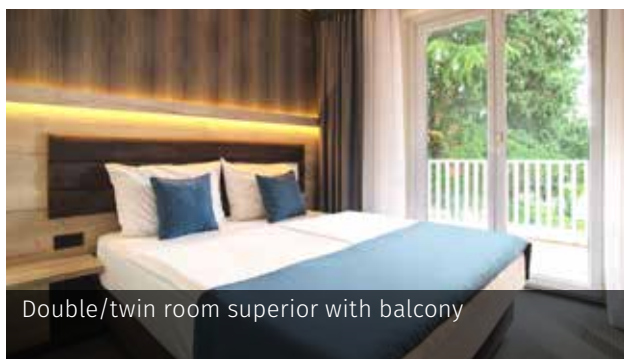
General information

- ▶ Hotel category: ****
- ▶ Opened/renovated: opened: 1968, renovated: 2007, 2019
- ▶ Check-in: 3 PM
- ▶ Check-out: 10 AM
- ▶ Late check-out: subject to availability, surcharge
- ▶ Reception opening hours: 24/7
- ▶ Number of floors: 4
- ▶ Lift: 1
- ▶ Number of rooms: 52
- ▶ Number of main beds: 172
- ▶ Part of the rooms have a sea view, all the rooms have balconies
- ▶ Rooms: all rooms have air conditioning, a TV, a minibar, and a safe deposit box.
- ▶ Congress centre: 3 Congress halls
- ▶ Mirta Wellness & Spa
- ▶ Indoor pool
- ▶ Hotel restaurant
- ▶ Hotel Haliaetum restaurant
- ▶ Lobby Bar

- ▶ San Simon Bistro
- ▶ Bambus Beach Bar
- ▶ Sun & Sea Beach Bar
- ▶ Room service: info reception
- ▶ Outdoors San Simon hotel lido by the sea in the summer season
- ▶ Kettle for tea/coffee available with a surcharge
- ▶ Bathrobe and slippers available with a surcharge
- ▶ Internet: Wi-Fi
- ▶ Computer: 1 in the lobby
- ▶ Laundry: surcharge
- ▶ Ironing: surcharge
- ▶ Electricity: 220 V
- ▶ For smokers: smoking is permitted on the balcony
- ▶ Baby cot and pets by prior arrangement and with a surcharge
- ▶ Credit cards: Mastercard, Diners, Visa, Maestro BA
- ▶ Certificates: ISO 9001:2008, HACCP

Rooms and equipment

	Double/twin room superior with balcony	Family room superior (2 adults + 1 children) with balcony	Family room superior (2 adults + 2 children) with balcony
Number	16	4	32
Size	16 - 17 m ²	23 m ²	23 m ²
Number of connected rooms	8 (4 x 2)		
Maximum number of guests per room	2	3	4
No. of rooms for guests with disabilities			
Bed size	160x200 or 2x90x200	2x 90x200	2x 90x200
Additional beds		sofa 90x200	sofa 90x200 and armchair 90x200
View	Park	Park	Park
Balcony	17	4	32
Bath with shower			
Shower	17	4	32





Mirta Wellness & Spa

Wellness Centre

Saunas	Roman steam bath (Turkish sauna), dry Finnish sauna, infrared sauna, and herbal Finnish sauna
Massages	More than 15 different types of massage
Beauty services	facials, manicures, pedicures, hair removal, body care
Therapeutic healing program	salt-pan mud wraps





Indoor pool

Indoor pool	
Depth	1.3 m
Temperature	30.5°C
No. of pools	1
Size	119 m ²
Water type	heated water
Admission	free of charge for hotel guests



San Simon Beach

For hotel guests and external visitors. Entrance for external guests is free of charge, but it's mandatory to rent sunshades and deck chairs for a fee.

The sandy beach descends into the sea very slowly, making it perfect for small children and non-swimmers. On the right part of the beach are recreational and sports facilities, such as a large waterslide and two beach volley fields. You can rent small boats, pedal boats, water scooters, tubes, etc.

Open during the summer season.





Gastronomy




	Hotel restaurant	Hotel Haliaeum restaurant	Lobby Bar
Capacity	500	70	
Breakfast	local, classic, international, some à la carte dishes buffet	local, classic, international, some à la carte dishes buffet	
Lunch	by prior arrangement, local, classic, international, buffet or sit-down		
Dinner	by prior arrangement, local, classic, international, buffet or sit-down		
Dress code	casual	casual	casual
Special features	seasonal menus, local products, located above the beach with a wonderful view of the sea		
			serves coffee, tea, non-alcoholic beverages, premium wines, local and imported brandies, desserts of the day, ice cream

	San Simon Bistro	Bambus Beach Bar	Sun & Sea Beach Bar
Capacity	450-500		
Special features	Open during the summer season. Serves a rich selection of refreshing drinks, cold and warm snacks, grilled meat and fish dishes.	Ice cream garden at the beach	Serves drinks and ice cream





Conference facilities

Lounge or hall	m ²	Seating arrangement		
				
FORTIS	16	15	/	/
ROTONDA	74	60	/	/
HORIZONT	80	65	35	30



THEATRE
CONFIGURATION



CLASSROOM



U-SHAPED



Family-friendly resort

As part of our special offer for families, they can rent accessories for children of different ages for a surcharge:

MINI Family kit (0-3):

kettle, bottle heater, potty, toilet attachment, footstool, baby monitor, bathrobe, inflatable armbands for swimming, children's shampoo

MIDI Family kit (4-6):

toilet attachment, footstool, bathrobe, inflatable armbands for swimming, children's shampoo

MAXI Family kit:

bathrobe, children's shampoo





HOTEL MIRTA ★★★★★



General information

- ▶ Hotel category: ****
- ▶ Opened/renovated: opened: 2008
- ▶ Check-in: 3 PM
- ▶ Check-out: 10 AM
- ▶ Late check-out: subject to availability, surcharge
- ▶ Reception opening hours: 24/7 (at the Hotel Haliaetum)
- ▶ Number of floors: 3
- ▶ Lift: 1
- ▶ Number of rooms: 44
- ▶ Number of beds (main and additional): 160
- ▶ Part of the rooms have a sea view, all the rooms have balconies
- ▶ Rooms: all rooms have air conditioning, a TV, a minibar, and a safe deposit box.
- ▶ Room service: info reception
- ▶ Outdoors San Simon hotel lido by the sea in the summer season

- ▶ Kettle for tea/coffee available with a surcharge
- ▶ Bathrobe and slippers available with a surcharge
- ▶ Internet: Wi-Fi
- ▶ Laundry: surcharge
- ▶ Ironing: surcharge
- ▶ Electricity: 220 V
- ▶ For smokers: smoking is permitted on the balcony
- ▶ Baby cot and pets by prior arrangement and with a surcharge
- ▶ Hotel restaurant: separate, common for the entire resort
- ▶ Credit cards: Mastercard, Diners, Visa, Maestro BA
- ▶ Certificates: ISO 9001:2008, HACCP

Rooms and equipment

	Family room (2 adults + 2 children)	Family triple room (2 adults + 1 children)	Suite Bellavista
Number	27	16	1
Size	26.5 m ²	26.5 m ²	44 m ²
Number of connected rooms	2 (2 x 4)		
Maximum number of guests per room	4	3	4
No. of rooms for guests with disabilities			
Bed size	2x 90x200	2x 90x200	200x200
Additional beds	sofa 180x200	bed 90x200	sofa 180x200
View	Park/sea	Park/sea	Park/sea
Balcony	27	16	1
Bath with shower	7	7	1
Shower	20	9	





DEPANDANCES SAN SIMON ★★★



General information

- ▶ Depandances Korala*** / Perla*** / Palma*** / Sirena ***
- ▶ Hotel category: ***
- ▶ Opened/renovated: opened: 1968 / 1971, renovated: 2007 / 2008, renovated a part of depandances (Sirena) 2019, 2023 also the 3 remaining depandances
- ▶ Check-in: 3 PM
- ▶ Check-out: 10 AM
- ▶ Late check-out: subject to availability, surcharge
- ▶ Reception opening hours: 24/7 (at the Hotel Haliaetum)
- ▶ Number of floors: 2
- ▶ Number of rooms: 26 / 26 / 26 / 26
- ▶ Number of beds (main and additional): 52/28
- ▶ Part of the rooms have balconies
- ▶ Rooms: all rooms in *** have air conditioning and a TV and minibar

- ▶ Outdoors San Simon hotel lido by the sea in the summer season
- ▶ Internet: Wi-Fi
- ▶ Laundry: surcharge
- ▶ Ironing: surcharge
- ▶ Electricity: 220 V
- ▶ For smokers: smoking is permitted on the balcony
- ▶ Baby cot and pets by prior arrangement and with a surcharge
- ▶ Hotelska restavracija: ločena, skupna za celoten resort
- ▶ Credit cards: Mastercard, Diners, Visa, Maestro BA
- ▶ Certificates: ISO 9001:2008, HACCP

Rooms and equipment

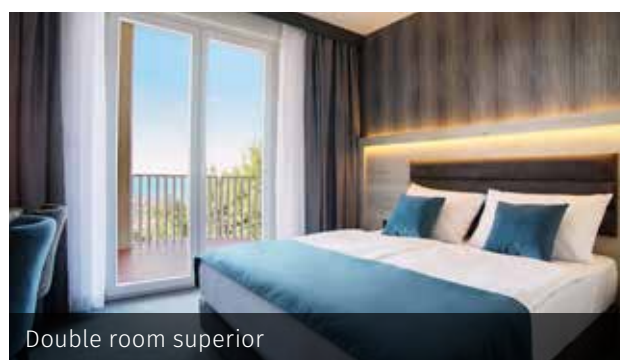
Depandance Korala

	Standard twin room	Family room (2 adults + 2 children)
Number	12	14
Size	23 m ²	24 m ²
Number of connected rooms		
Maximum number of guests per room	2	4
No. of rooms for guests with disabilities		
Bed size	160x200	160x200
Additional beds		Armchair 90x200
View	Park	Park
Balcony	12	
Bath with shower		
Shower	12	14



Depandance Sirena

	Double room superior	Family room superior (2 adults + 2 children)
Number	12	14
Size	16.5 m ²	22 m ²
Number of connected rooms	0	0
Maximum number of guests per room	2	4
No. of rooms for guests with disabilities		
Bed size	160x200	160x200
Additional beds		sofa 90x200 and armchair 90x200
View	Park/sea	Park/sea
Balcony	12	
Bath with shower		
Shower	12	14



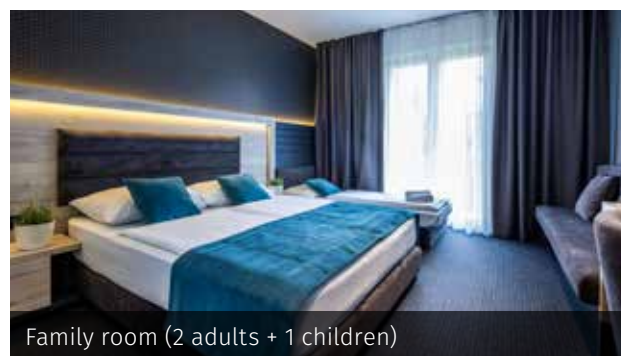
Depandance Perla

	Standard twin room	Family room (2 adults + 2 children)
Number	12	14
Size	23 m ²	24 m ²
Number of connected rooms		
Max. no. of guests per room	2	4
Bed size	160x200	160x200
Additional beds		2x 160x200 Sofa and armchair
View	Park	Park
Balcony	12	
Bath with shower		
Shower	12	14



Depandance Palma

	Standard twin room	Family room (2 adults + 2 children)
Number	12	14
Size	22–24m ²	23 m ²
Number of connected rooms		
Max. no. of guests per room	2	4
Bed size	160x200	160x200
Additional beds		160x200 Sofa
View	Park	Park
Balcony	12	
Bath with shower		
Shower	12	14



Depandance Park

	Double room	Triple room	Four-bed room
Number	4	9	13
Size	15.5 m ²	15.5 m ²	15.5–16.5 m ²
Number of connected rooms	0	0	0
Maximum number of guests per room	2	3	4
No. of rooms for guests with disabilities			
Bed size	90x200	2x 90x200	2x 90x200
Additional beds		90x200	2x bunk bed 80x190
View	Park	Park	Park
Balcony			
Bath with shower			
Shower	4	9	13



DISCOVER IZOLA AND THE SURROUNDING AREA



Izola – lively Mediterranean town



Archaeological Park Simon Bay



St. Maurus Church and bell tower with a view



Izolana – House of the Sea



Besenghi degli Ughi Palace



Following the old railway on bicycle



Diving among the remains of the Roman harbour



Wine tasting on a boat



Surfing and kiteboarding at the lighthouse



HOTELS & RESORTS

Sava Hoteli Bled
Terme 3000 – Moravske Toplice
Zdravilišče Radenci
Terme Ptuj
St. Bernardin Resort Portorož
Salinera Resort Strunjan
San Simon Resort Izola

Follow us on



www.sava-hotels-resorts.com